



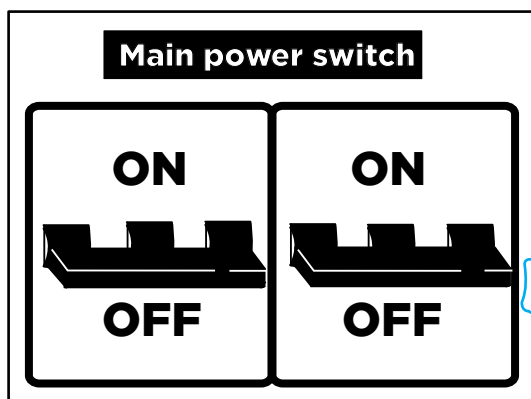
WARNING: Electrical wirings of the iotty Light Switch should be done by a professional electrician. Incorrect installation is dangerous or illegal. Please call a professional electrician if you are unfamiliar or uncomfortable with electrical work.

Important: it is recommended to use iotty Light Switch for residential and dry indoor locations only.

Electrical Installation Requirements

- * A Neutral wire (requires all three AC electrical connections at the wall switch)
- * A single pole light switch (for lights controlled by 2 switches go to section X)
- * The light switch box must be at least 2 inches deep

1

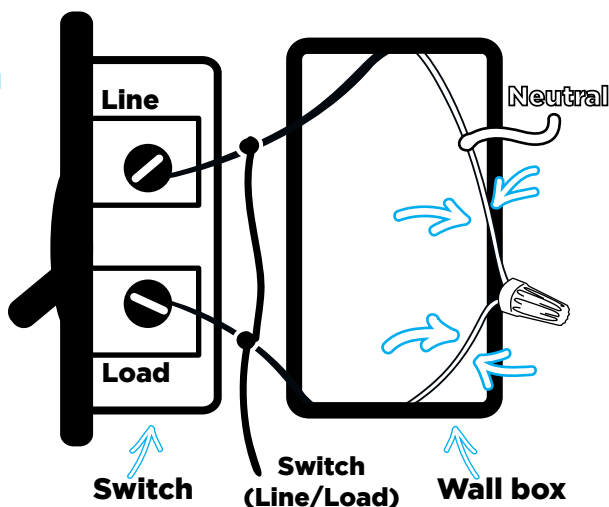


Turn off the power at the circuit breaker for the switch you are replacing.

You may need to shut OFF more than one circuit breaker/switch to make sure the switch you're working on is powered OFF.

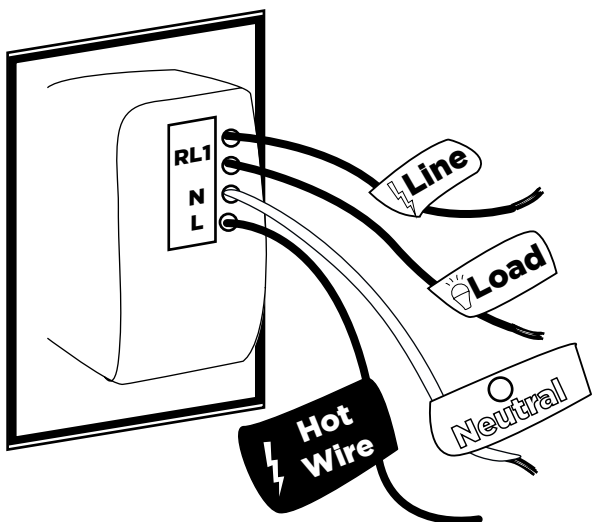
IMPORTANT: USE A NON-CONTACT VOLTAGE DETECTOR OR FLIP YOUR LIGHT SWITCH A FEW TIMES TO MAKE SURE THAT THE POWER IS OFF.

2



Unscrew and disconnect the wires from the old switch using a screw driver. Remember that you **must** have a Neutral wire to install iotty Light Switch.

3



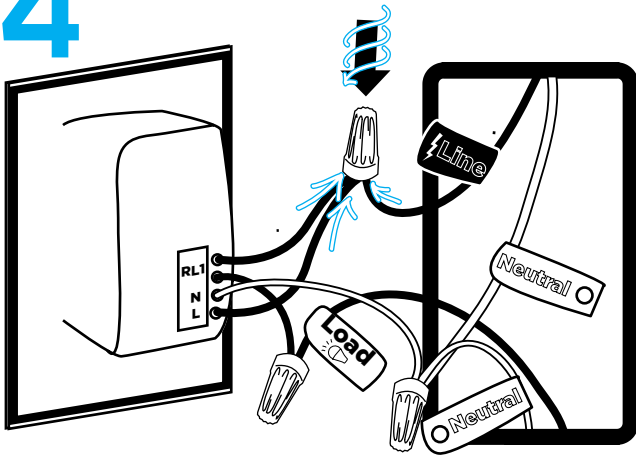
Identify the wires on your iotty Light Switch Wifi.

Switch (Line/Load) wires - On this light switch, the switch wires are two black wires for every RL (one Line and one Load) and one Hot Wire. Every light switch will have both the Line and the Load wires.

Neutral wire - The **iotty Light Switch** requires this wire, but isn't always present in your electrical wiring at home. If present, the neutral wire is normally found within the wall box with a wire nut on top of it. If it's not present you need to rewire the switch box.

Ground wire - It's normally green or copper in color. If present place it into the wall box.

4



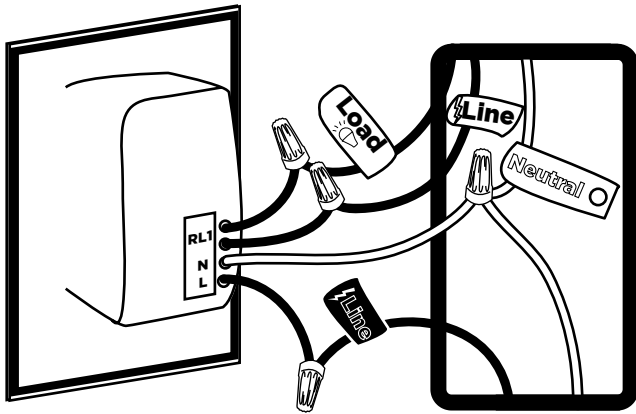
Before installing the iotty Light Switch be sure that the faceplate is not attached (to remove do as shown in step 6).

Connect Neutral wires together.

Connect the black wire labeled as 'L' and one of the two RL wires, to the available Hot Wire wire.

Connect the remaining RL wire to the Load.

If you have a ground wire, place it into the wall box.



In case of loads operating at different voltages than iotty.

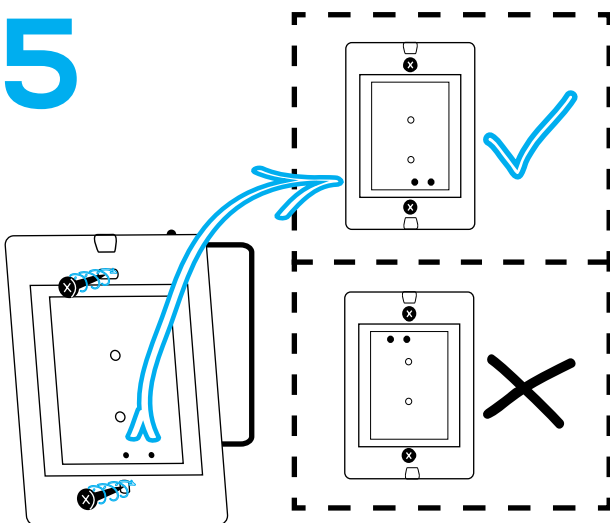
Connect Neutral wires together.

Connect the Hot Wire wire with the Hot Wire in the wall.

Every RL has two wires, connect one to the External Power Supply and one to the Load.

If you have a ground wire, place it into the wall box.

5

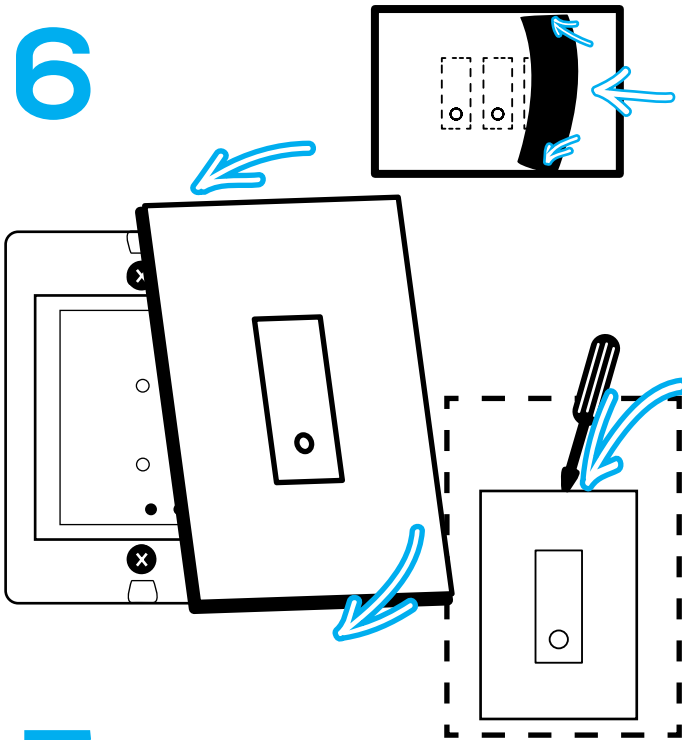


Push all the wires back into the wall box and try to allow as much space for the switch as possible.

Align the two screw terminals and screw in the iotty Light Switch.

Remember to place the two black buttons **down**.

6



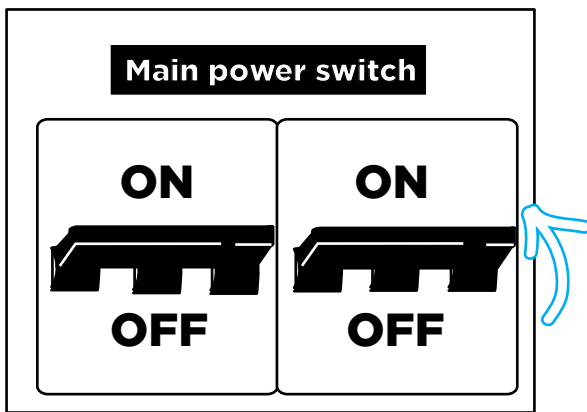
If you want to hide a disabled gang apply on the back of the faceplate the cardstock provided.

You can choose between black or white based on your faceplate color.

Attach your iotty Light Switch faceplate starting from one of the two short side.

To remove use a screwdriver to lift the faceplate.

7



Turn on the power at the circuit breaker.

8



Download the iotty app from Google Play or the Apple Store and sign in.

Connect to your iotty Light Switch wifi [IOTTY_serial-number].

Go to the app and add a new device.

iotty.com/support

