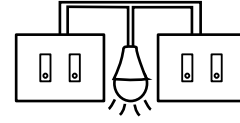




Diverter
LS E2-2

How to install a multiple gang iotty Light Switch as a 3 way switch application (to control a load from two point).



Electrical Installation Requirements

- * A Neutral wire (requires all three AC electrical connections at the wall switch)
- * A single pole light switch (for lights controlled by 2 switches go to section X)
- * The light switch box must be 2 inches deep

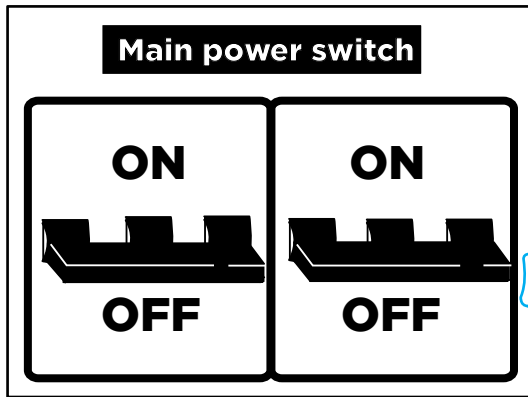
WARNING: Electrical wirings should be done by a professional electrician. Incorrect installation is dangerous or illegal. Please call a professional electrician if you are unfamiliar or uncomfortable with electrical work.

Important: it is recommended to use iotty Light Switch for residential and dry indoor locations only.

Remember:

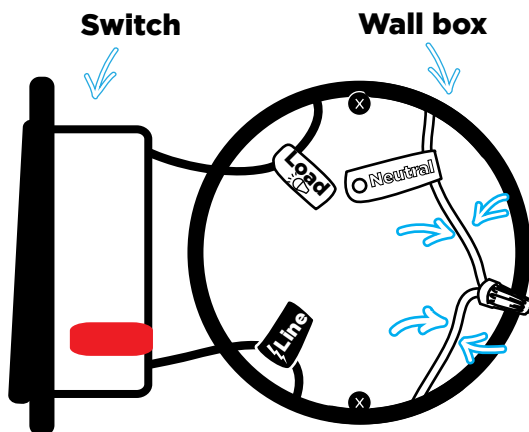
If you are connecting a three gangs switch you won't be able to use **one of the three gangs**. If you are making a 2 ways between two switches, one mechanical and one iotty, you won't be able to control the light from the app, **you will lose all smart functions**. [For the instructions of this case go to www.iotty.com/support]

1



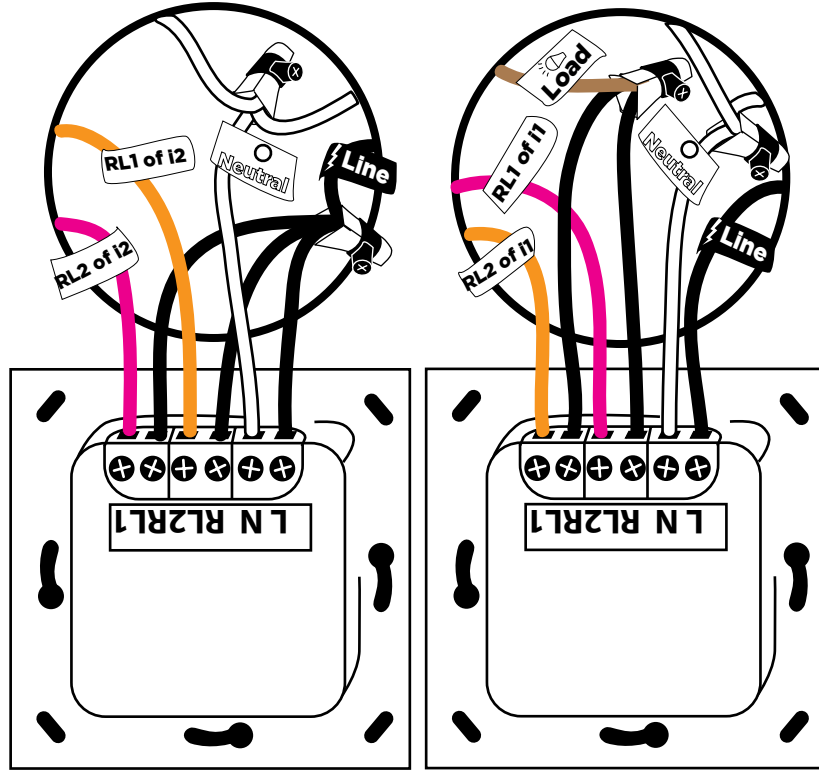
Turn off the power at the circuit breaker for the switch you are replacing.

2



Unscrew and disconnect the wires from the old switch using a screw driver. Remember that you **must** have a Neutral wire to install iotty Light Switch.

3



Choose which iotty will become **i1** and which one **i2**.

iotty 1 (i1):

Insert the Neutral wire into the terminal screw labeled with N.

Insert the Hot Wire from your wall in the screw terminal labeled with L and in one of the screw terminals of two RLs (in this case RL1 and RL2).

Connect the RLs of **i1** inverted with those of **i2** (RL1 with the RL2 of **i2** and RL2 with the RL1 of **i2**).

iotty 2 (i2):

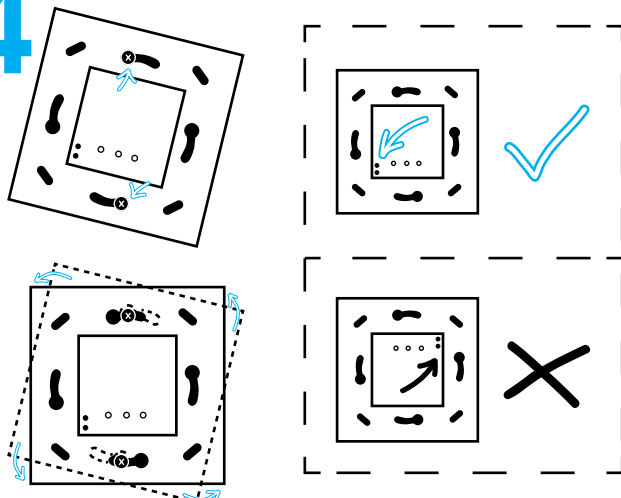
Insert the Neutral wire into the terminal screw labeled with N.

Insert the Hot Wire wire from your wall into the screw terminal labeled with L.

Insert in one of the screw terminal of two RLs (in this case RL1 and RL2) the Load you want to control.

Insert in the remaining screw terminal of the RLs involved the inverted wires of **i1** (RL1 with the RL2 of **i1** and RL2 with the RL1 of **i1**).

4

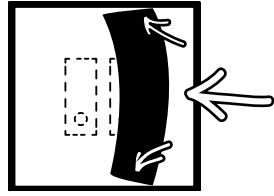


Push all the wires back into the wall box and try to allow as much space for the switch as possible.

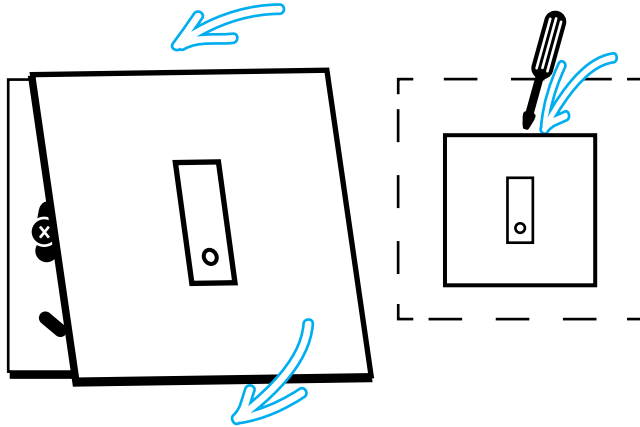
Insert the iotty Light Switch in the wall box screws.

Do it in order to place the two black buttons **down**.

5



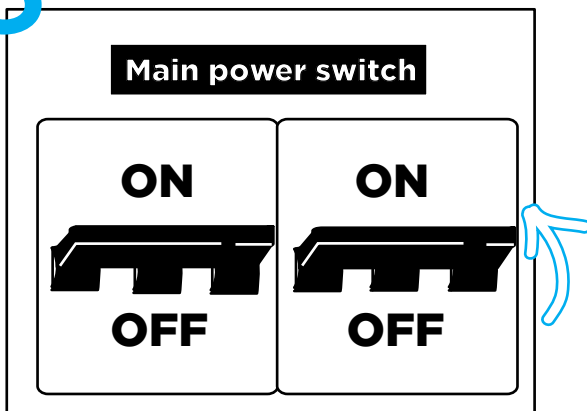
If you want to hide a disabled gang apply on the back of the faceplate the cardstock provided (available only for multiple gangs). You can choose between black or white based on your faceplate color.



Attach your iotty Light Switch faceplate starting from the upper or the lower side.

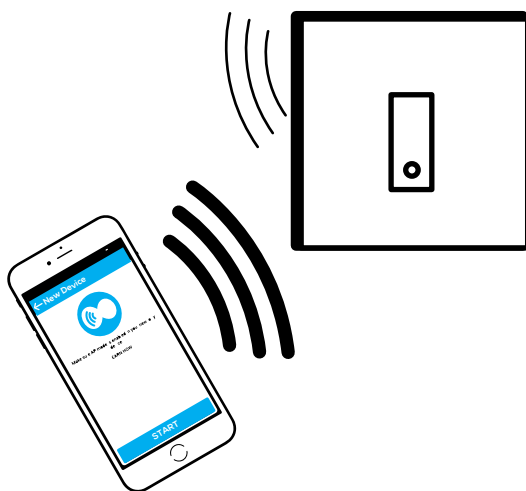
To remove use a screwdriver to lift the faceplate.

6



Turn on the power at the circuit breaker.

7



Download the iotty app from Google Play or the Apple Store and sign in.

Connect to your iotty Light Switch wifi [IOTTY_serial-number].

Go to the app and add a new device.

Set the light of each iotty (in this case light1 and light2) as Deviator.

iotty.com/support

