



Model: U3
ID: LSWU33 (3 gang)

ENGLISH

MLSU304

iotty Smart Switch
Model: U3
ID: LSWU33 (3 gang)
Input 110 Vac
Frequency 60Hz
Max 5A per RL
Ambient temperature: 77°F | 25°C
Operating temperature: 32°F to 104°F | 0°C to 40°C
Only works with 2.4GHz Wi-Fi band
Electrical Control (Type 1.B)
Pollution Degree: 2
Rated Impulse Voltage: 2.5kV
Type of load: Resistive load
Overcurrent protective device external: 15A circuit breaker

Warranty
For warranty information visit us at www.iotty.com/warranty

Important Notes

Safety Precaution

Install in accordance with all national and local codes.

Hire a professional electrician if you are not familiar or not comfortable with electrical work, or if the wiring in your electrical box looks different from the pictures.

For indoor use and dry location only.

Installation Precaution

Neutral wire required.

IOTTY srl
Via Del Laghetto, 18/20
33080 Porcia (PN) - ITALY
iotty@iotty.com
support@iotty.com

Input L/N should be connected to a 16A circuit breaker, and each way output should be connected to a 5A circuit breaker before used.

About 3-way

3-way switch is the type of the switch that allows to control an electrical load from 2 different locations.

Thanks to the Multi-way feature, you can connect multiple iotty switches together through the Wi-Fi network to control the same light

For more details check www.iotty.com/multi-way

Troubleshooting

1. In case the switch or the touch doesn't work, reset the switch in this order:

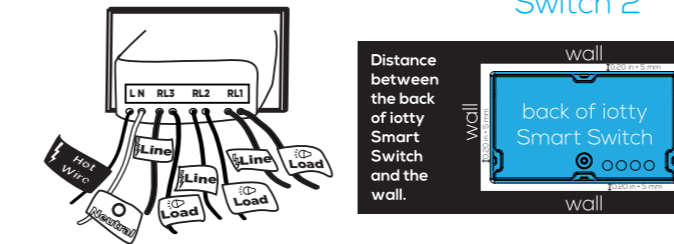
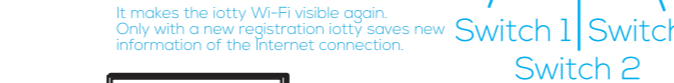
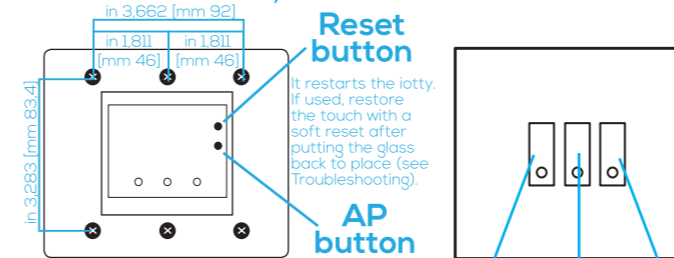
- From the app (soft reset) [Device settings > Reset device],
OR
- By powering off the circuit breaker,

2. In case of network error, try these steps in order:

- Restart the router,
OR
- Remove the faceplate and push the Reset button on the switch.
OR
- Remove the faceplate and push the AP button on the switch. Repeat device registration (see point 6 of instructions).

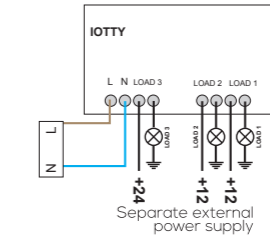
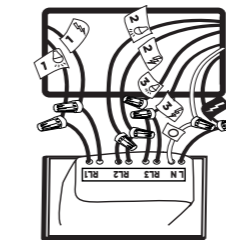
Restore the touch sensitivity with a soft reset every time you put the faceplate back to place (see point 1 of troubleshooting).

Overview of the iotty Smart Switch



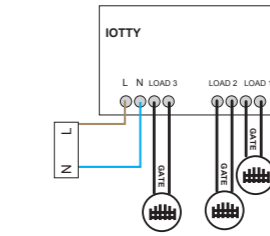
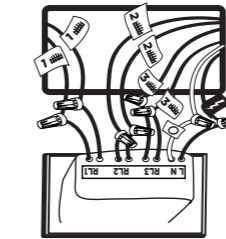
All instructions for installation on the other side of this manual.

In case loads operate at a different voltage from iotty's:



L= Line
N= Neutral
Main power supply
110 Vac

In case loads need a pulse to activate:



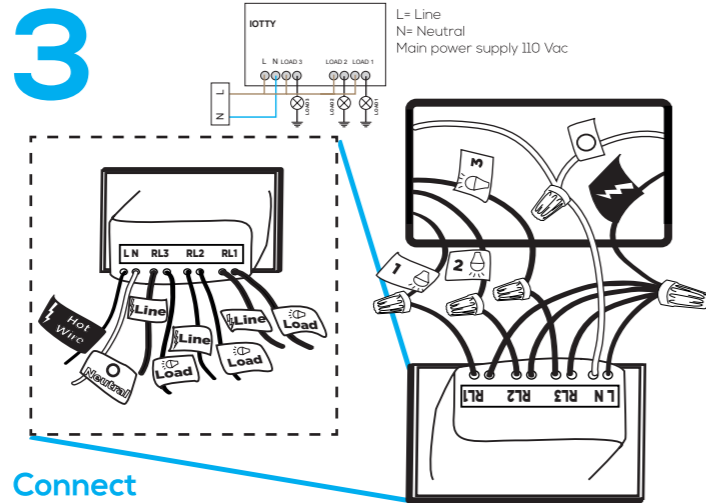
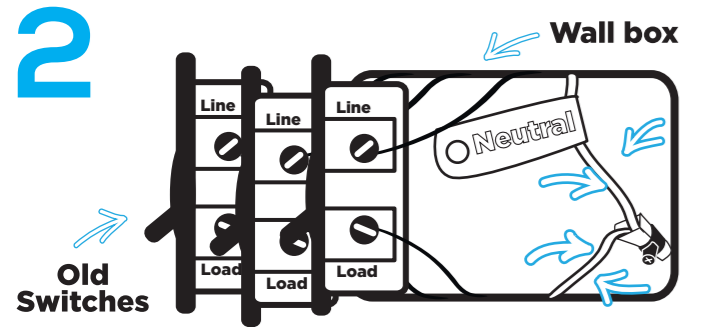
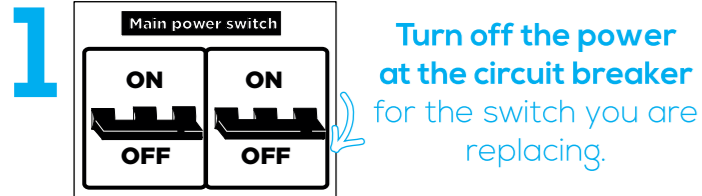
L= Line
N= Neutral
Main power supply
110 Vac

To set the switch properly, go to the iotty app, go to Device Settings and under "Gang Type" select "Gate".

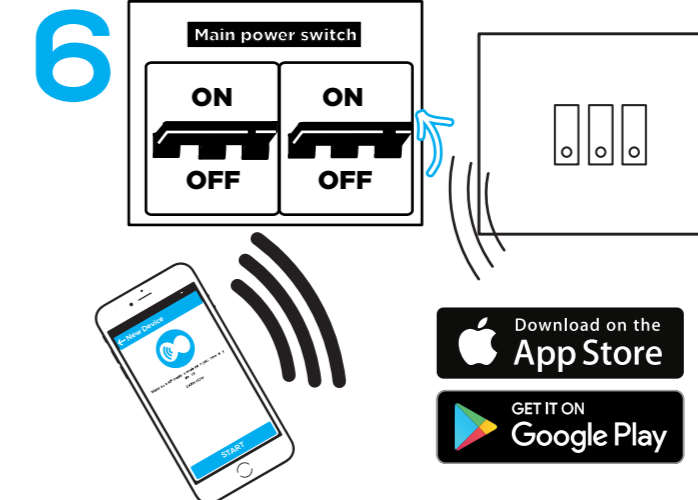
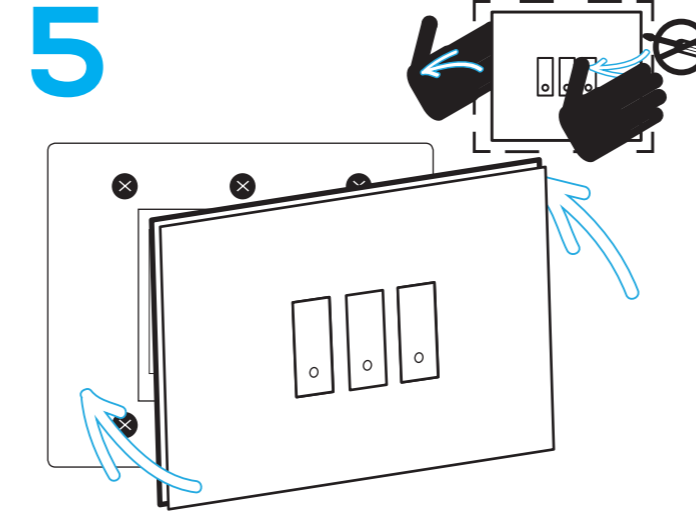
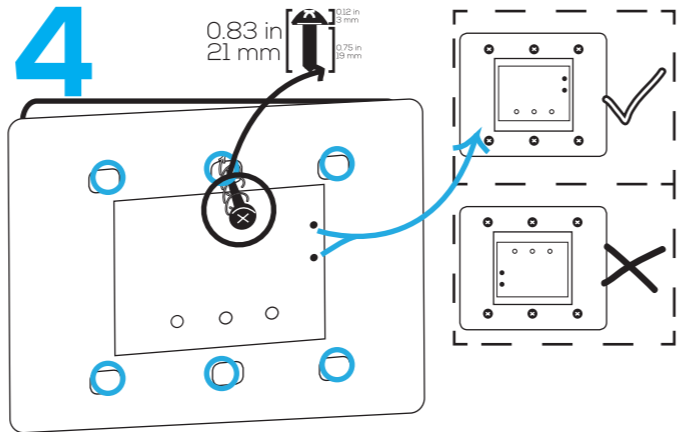
WARNING: Electrical wirings should be done by a professional electrician. Incorrect installation is dangerous or illegal. Please call a professional electrician if you are unfamiliar or uncomfortable with electrical work.

More info at:
www.iotty.com

Read the **Important Notes** on the other side of this manual before starting the installation.



Input L/N should be connected to a 16A circuit breaker, and each way output should be connected to a 5A circuit breaker before used.



To enable the iotty skill in Alexa:

Login to your personal Alexa page (either in your browser, or in the Alexa mobile App), and tap "Smart Home" in the menu.

Tap on "Enable smart home skills", then search for "iotty Smart Home".

Tap on "Enable", and follow the instructions. You will need to enter your iotty username and password.



To enable iotty in the Google Assistant app

Make sure that the "Home control" service is enabled in your Google account.

Enter your Google Assistant settings in Google app menu, then tap "Home control".

Tap the '+' icon to add device, then select "iotty". Follow the instructions. You will need to enter your iotty username and password.

WARNING: Electrical wirings should be done by a professional electrician. Incorrect installation is dangerous or illegal. Please call a professional electrician if you are unfamiliar or uncomfortable with electrical work.